

This Page Is Inserted by IFW Operations
and is not a part of the Official Record

BEST AVAILABLE IMAGES

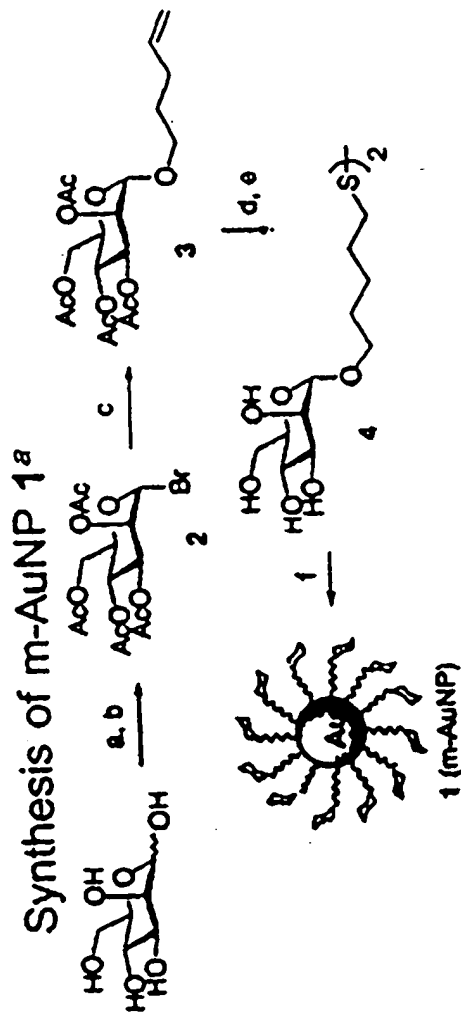
Defective images within this document are accurate representations of the original documents submitted by the applicant.

Defects in the images may include (but are not limited to):

- BLACK BORDERS
- TEXT CUT OFF AT TOP, BOTTOM OR SIDES
- FADED TEXT
- ILLEGIBLE TEXT
- SKEWED/SLANTED IMAGES
- COLORED PHOTOS
- BLACK OR VERY BLACK AND WHITE DARK PHOTOS
- GRAY SCALE DOCUMENTS

IMAGES ARE BEST AVAILABLE COPY.

**As rescanning documents *will not* correct images,
please do not report the images to the
Image Problem Mailbox.**



^a Keys: (a) Ac₂O, pyr. DMAP, 90%. (b) HBr/HOAc, 80%. (c) 4-pentenyl alcohol, Hg(CN)₂, 88% (d) HSAc, AIBN, dioxane, 80%. (e) NaOMe (cat.), MeOH, 97%. (f) HAuCl₄, NaBH₄.

Fig. 1



Fig. 2A



Fig. 2B

Typical TEM images of sectioned areas of (A) pili of the *E. coli* ORN178 strain bound with m-AuNP, (B) the *E. coli* ORN208 strain deficient of the *fimH* gene without m-AuNP binding. The experiments were performed in LB at room temperature. Scale bar = 100 nm.

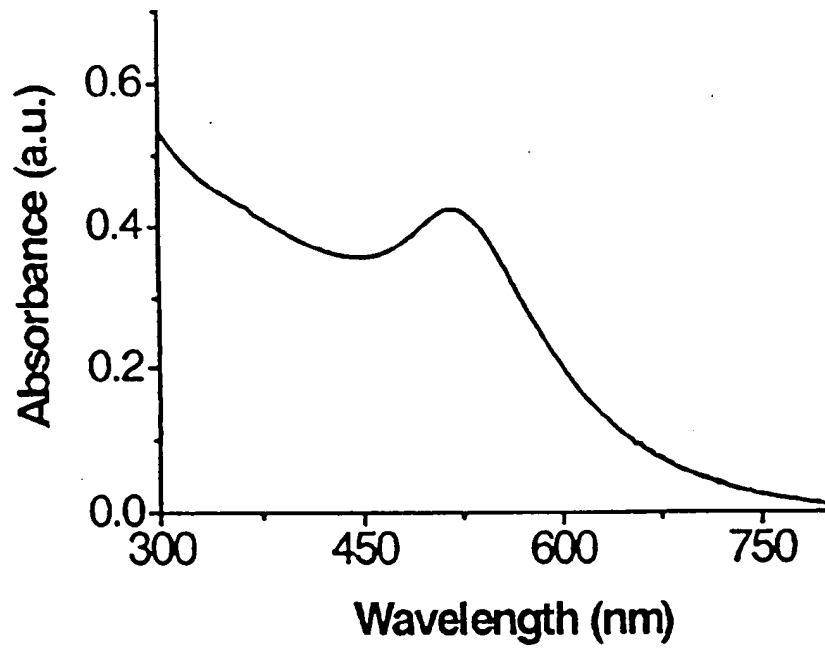


Fig. 3

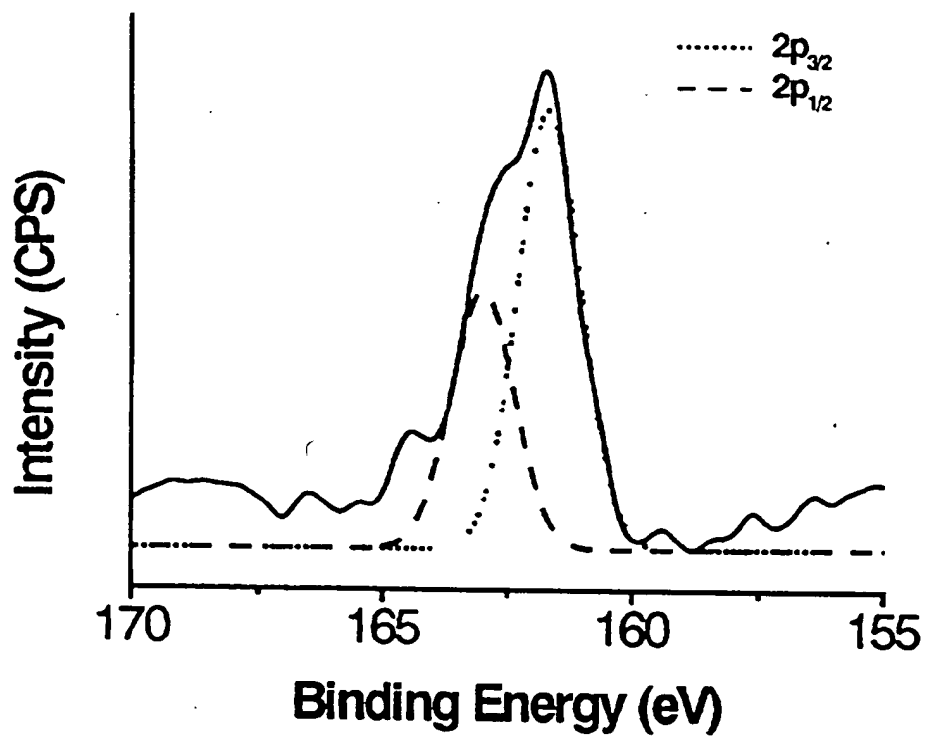


Fig. 4

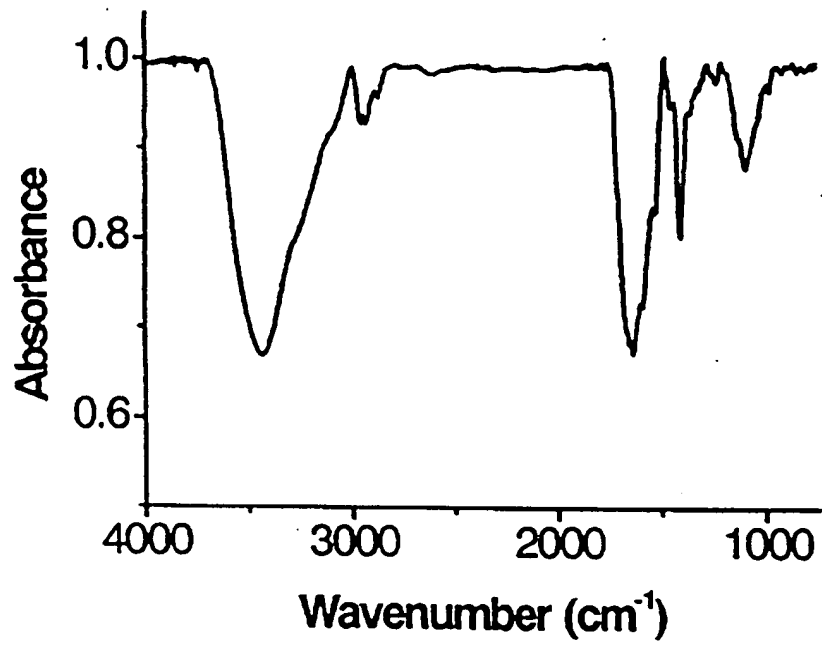


Fig. 5

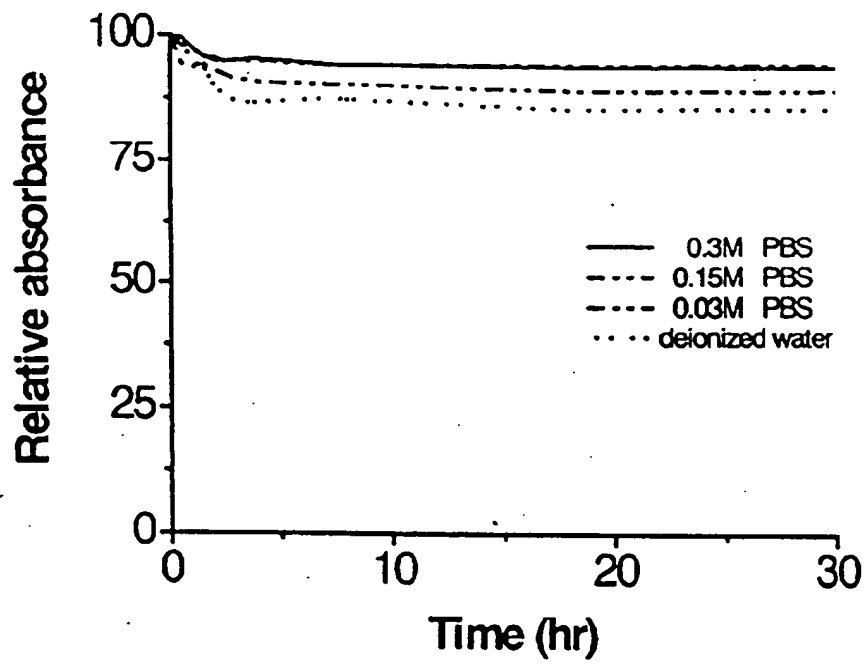


Fig. 6

FIGURE 7

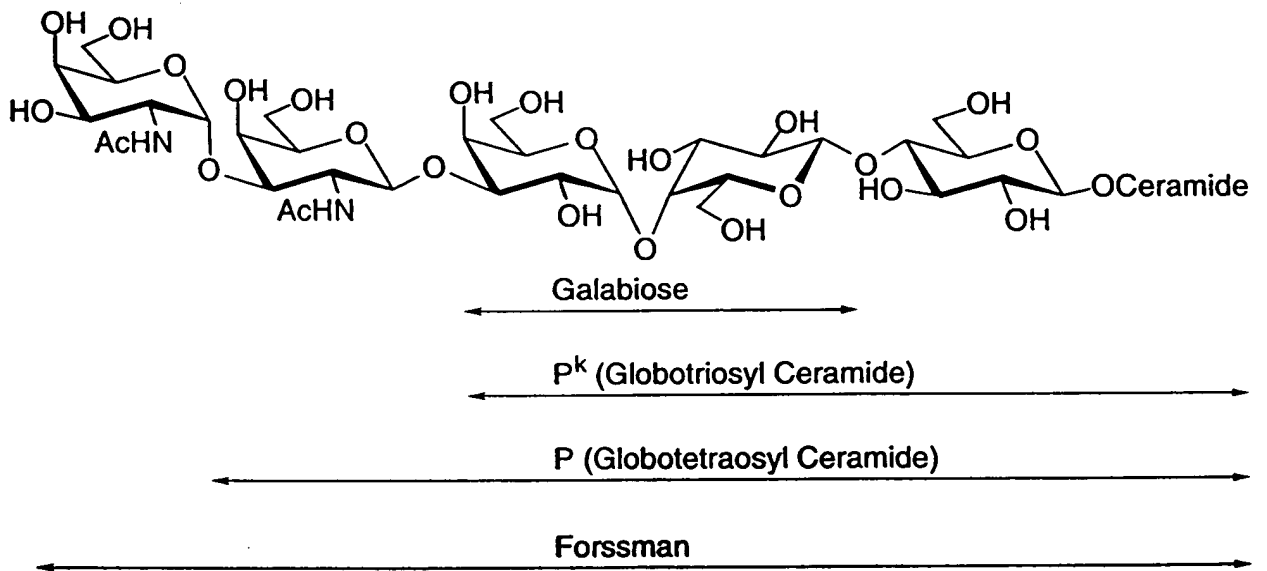


Fig. 8

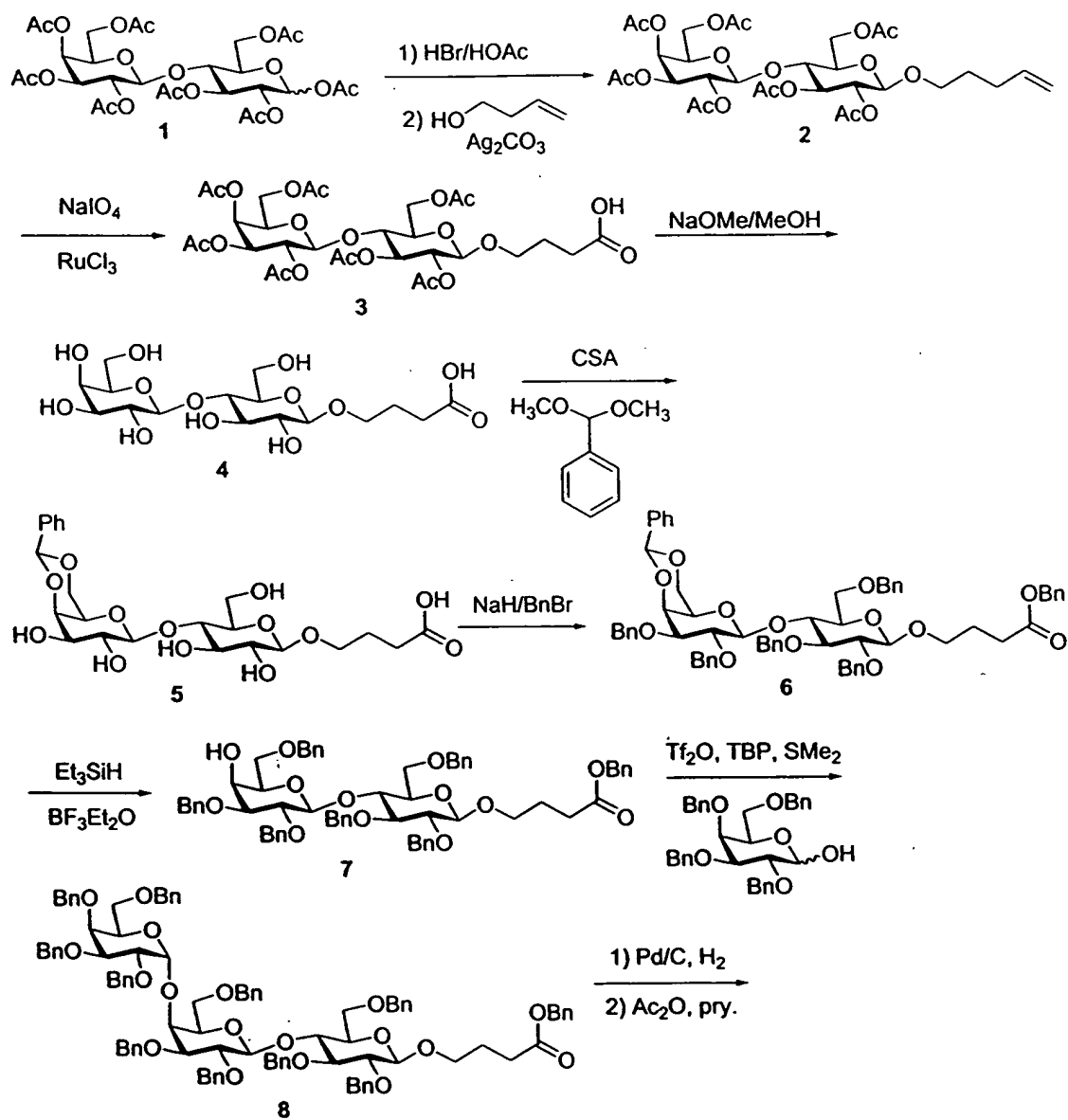


Fig. 8 (cont.)

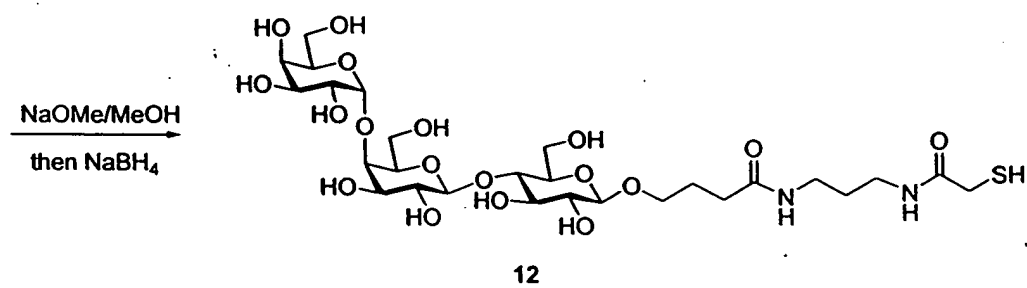
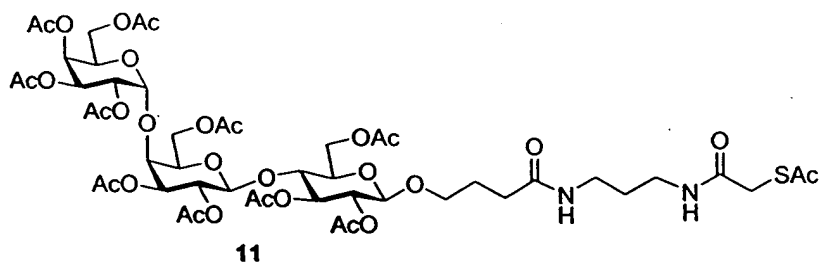
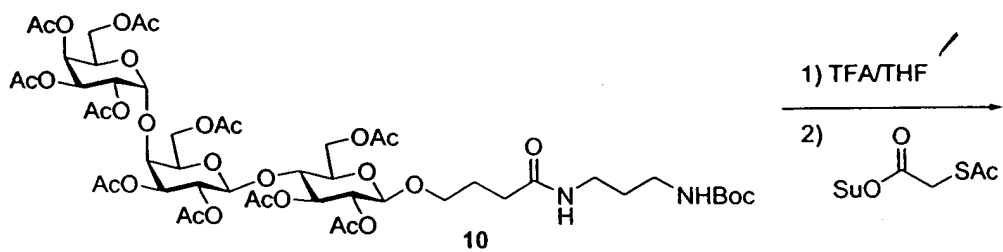
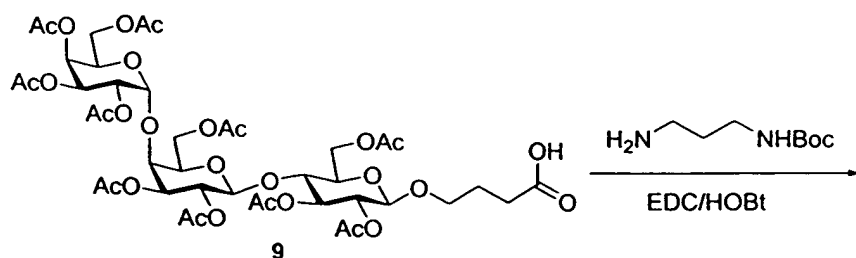


FIGURE 9

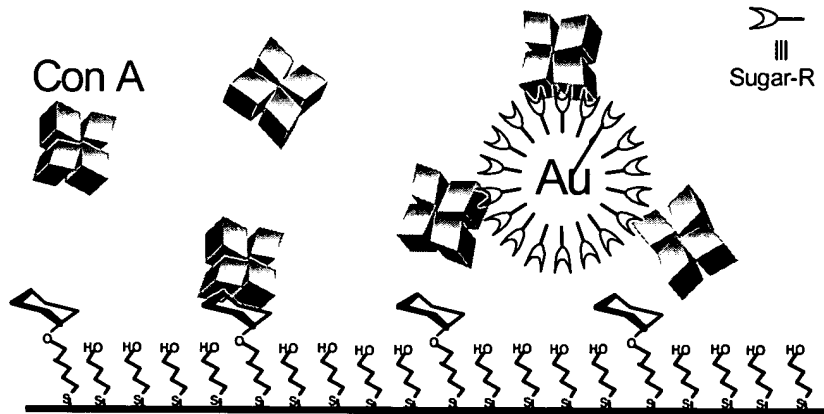
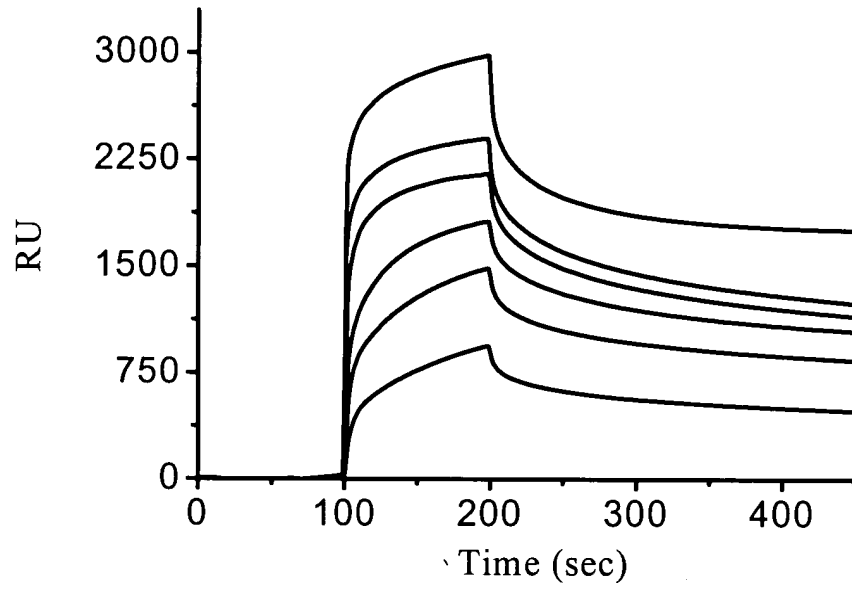


Figure 10

A.



B.

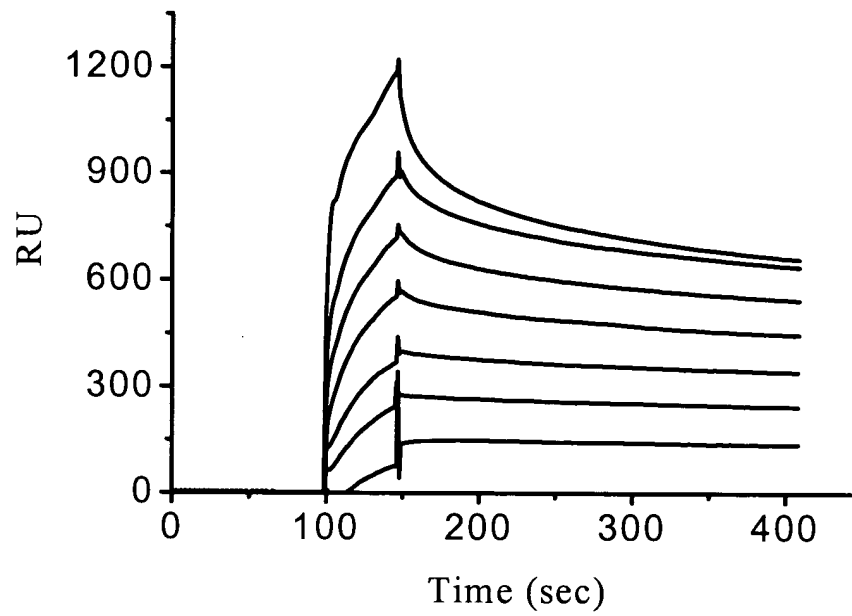
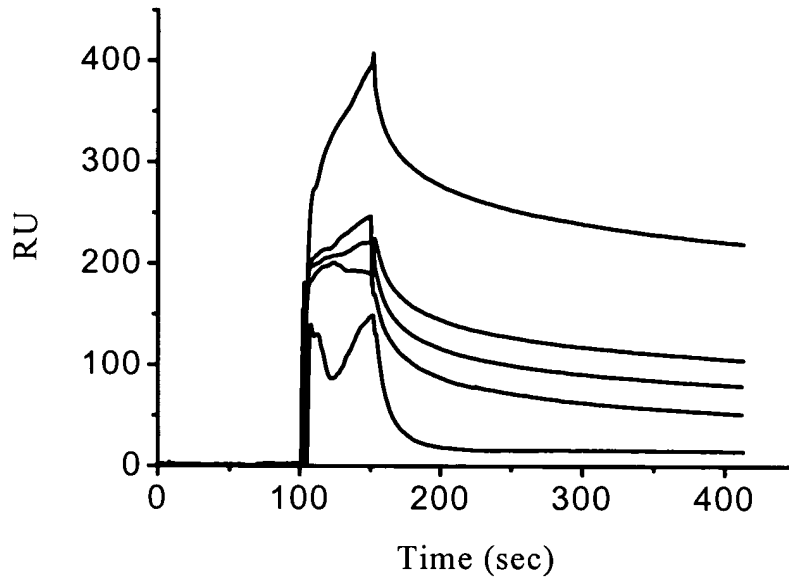


Figure 11

A.



B.

